

# Delivering the Best in *Storage & Transport*

Every foodservice establishment depends on storage and transport equipment. From the receiving dock to the cooler and the kitchen to the dining room, carts and cabinets do the heavy work of transporting food from one area to another. Hot cabinets allow you to navigate over long distances ensuring optimum temperatures from transport to delivery. Storage too, is a vital part of every foodservice business. Shelving, dunnage racks and ingredient bins store food safely and sanitary, keeping your most popular items within easy reach.

## S-Series Adjustable Dish Caddy

- Polyethylene construction
- Supports up to 500 lb
- 6 dividers adjust to hold 4½" - 13" plates
- Holds 45 - 60 plates per column
- 5" front swivel casters with brake and 10" non-marking rear wheels
- Vinyl cover included
- Black (110), Slate Blue (401), Speckled Gray (480) or Dark Brown (131)

### ADCS

29½" x 38¼" x 32½"



## S-Series Dunnage Racks

- Polyethylene construction
- 21"d x 12"h
- Available in Dark Brown (131) or Speckled Gray (480)

### Solid Top

- DRS30** 1500 lb Capacity, 30"w
- DRS36** 1500 lb Capacity, 36"w
- DRS48** 3000 lb Capacity, 48"w
- DRS60** 3000 lb Capacity, 60"w

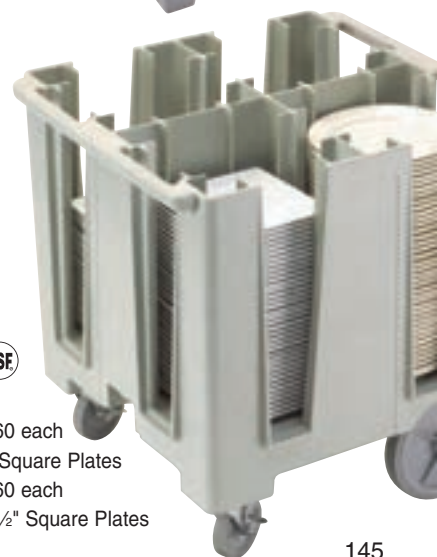
### Slotted Top

- DRS300** 1500 lb Capacity, 30"w
- DRS360** 1500 lb Capacity, 36"w
- DRS480** 3000 lb Capacity, 48"w
- DRS600** 3000 lb Capacity, 60"w



## Versa® Dish Caddies

- Durable, polyethylene exterior
- Supports up to 500 lb
- 5" front swivel casters w/brake and 10" non-marking rear wheels
- Vinyl cover included
- Available in Black (110), Dark Brown (131), Slate Blue (401) or Speckled Gray (480)



- DCS950** Holds 5 Columns of 45-60 each  
9½" Round Plates or 8" Square Plates
- DCS1125** Holds 4 Columns of 45-60 each  
11¼" Round Plates or 9½" Square Plates

**CAMBRO**  
TRUSTED FOR GENERATIONS™



Approved for use  
in walk-in coolers,  
freezers and any  
storage area.

## Keg Stackers

- Heavy duty aluminum units store 1/4 and 1/2 barrels (kegs) of beer as well as dry general storage
- 3 adjustable shelves
- Lifetime guarantee against rust and corrosion and a 5 year guarantee against workmanship and material defects
- Made in the USA

**NEWAGE**  
INDUSTRIAL  
**NEWAGE**

NSF

18"d x 76"h

<b>31842TT7</b>	(4) 1/2 Barrel Cap., 42"l
<b>NS933</b>	(6) 1/2 Barrel Cap., 60"l
<b>NS475</b>	(8) 1/2 Barrel Cap., 72"l
<b>1288</b>	(8) 1/2 Barrel Cap., 80"l
<b>1289</b>	(10) 1/2 Barrel Cap., 93"l

Double Deep, 34"d x 84"h

<b>51169</b>	(8) 1/2 Barrel Cap., 42"l
<b>51170</b>	(12) 1/2 Barrel Cap., 54"l
<b>51171</b>	(12) 1/2 Barrel Cap., 60"l
<b>51172</b>	(16) 1/2 Barrel Cap., 72"l
<b>51173</b>	(16) 1/2 Barrel Cap., 80"l
<b>51174</b>	(20) 1/2 Barrel Cap., 93"l

## Dunnage Racks

- Aluminum
- Feet are capped with durable plastic inserts to prevent floor damage
- 20"w x 12"h (also available in 24"w x 8"h)
- Guaranteed to never rust or corrode
- Made in the USA

<b>6004</b>	36" long, 2000 lb Cap.
<b>6005</b>	48" long, 2000 lb Cap.
<b>6006</b>	60" long, 1500 lb Cap.

Keeps product  
organized and off  
of the floor.



NSF

## Dunnage Rack Covers

- Removable aluminum sheet nests over dunnage rack frame (sold separately)
- Made in the USA



Anti-slip, perforated  
cover features a  
raised tread.

Anti-Slip, Perforated

<b>51101</b>	20" x 36"
<b>51102</b>	20" x 48"
<b>51103</b>	20" x 60"
<b>Solid</b>	
<b>95456</b>	20" x 36"



## Mat Cart

- Hooks secure perforated mats for storage, transportation and cleaning
- 500 lb capacity
- Knocked down
- Made in the USA

**NEWAGE**  
INDUSTRIAL  
**NEWAGE**

**51087**

24" x 45 1/4" x 36"



## Bun Pan Rack

- All welded aluminum construction
- Designed to hold 13" x 18", 14" x 18" and 18" x 26" pans
- 20 pan capacity
- End loading
- 3" runner spacing
- Ribbed angle slides
- (4) 5" dia heavy duty platform type casters
- Lifetime guarantee against rust and corrosion and a 5 year guarantee against material defects and workmanship
- Made in the USA

**1331**

20 3/4" w x 26" d x 69 1/4" h

NSF

**NEWAGE**  
INDUSTRIAL  
**NEWAGE**





### myCart™ Series

- Polymer shelves are impact resistant
- 7/16" deep ship's edge lip around shelf perimeter
- Ergonomic handle
- Available in Gray (G), Black (BL) and Blue (BU) with Microban® antimicrobial product protection

#### 2 Shelf Carts

**MY1627-24** 31 7/16"l x 18 1/16"w x 35 3/8"h, 300 lb Cap.

**MY2030-24** 34 3/8"l x 23 1/2"w x 35 3/8"h, 300 lb Cap.

**MY2636-25** 40 1/4"l x 27 11/16"w x 36 5/8"h, 400 lb Cap.

#### 3 Shelf Carts

**MY1627-34** 31 7/16"l x 18 1/16"w x 35 3/8"h, 400 lb Cap.

**MY2030-34** 34 3/8"l x 23 1/2"w x 35 3/8"h, 400 lb Cap.

**MY2636-35** 40 1/4"l x 27 11/16"w x 36 5/8"h, 500 lb Cap.

MY1627-34



### Polymer "Poker Chip" Dish Dollies

- Polymer construction with Microban® antimicrobial product protection
- 5" neoprene swivel casters (2 with brakes)
- Vinyl dust cover included
- Aesthetic Blue

PCD11A

#### 9 Dish Columns

**PCD5** 23 7/16" x 31 7/8" x 23 7/16"

**PCD7** 27 3/16" x 31 7/8" x 27 3/16"

#### 4 Dish Columns

**PCD8** 21 1/16" x 31 7/8" x 21 1/16"

**PCD9** 23 3/16" x 31 7/8" x 23 3/16"

**PCD11** 26 9/16" x 31 7/8" x 26 9/16"

**PCD12** 29 3/4" x 31 7/8" x 29 3/4"

#### Adjustable - 4 to 16 Columns

**PCD11A** 26 5/8" x 31 7/8" x 26 5/8"

#### Dish Size

5 5/8" dia

6 7/8" dia

8 1/4" dia

9 1/2" dia

11" dia

12 5/8" dia

#### Dish Cap.\*

360

540

240

240

240

240

240-640

\* Loading capacity dependent upon china shapes & thickness

### Bow Tie™ Polymer Dunnage Racks

- Available with Microban® antimicrobial product protection (add "MB" to part number when ordering)
- Front-to-back slots provide easier loading and unloading and superior air flow prolongs shelf life
- Rust and corrosion proof polymer construction

**HP2230PD** 22"w x 30"l x 12"h, 1500 lb cap.

**HP2236PD** 22"w x 36" x 12"h, 1500 lb cap.

**HP2248PD** 22"w x 48" x 12"h, 3000 lb cap.

**HP2260PD** 22"w x 60" x 12"h, 3000 lb cap.



Bow-Tie™ can join racks together.



### SmartWall G3 Task Station

- 40" x 31 1/4" OA
- Includes 40" wall track, 2 uprights, 2 shelf supports, 1 shelf and 18" x 36" grid

SWK36-1



### Food Prep Accessory Pack

- Includes small shelf, 2 wire baskets, bin holder, small bin, 2 prong hooks and 6 standard hooks
- Grid not included

SWA2



SWK36-1 SHOWN WITH FOOD PREP ACCESSORY PACK.

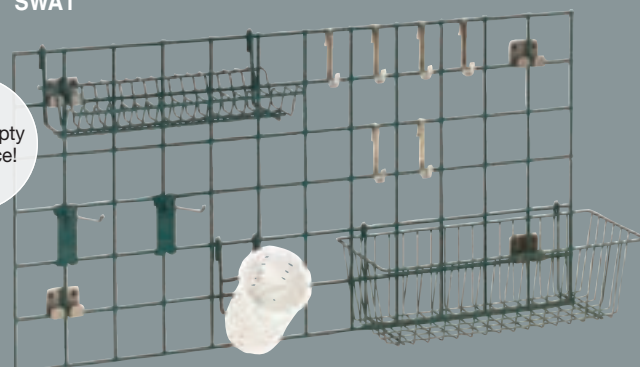
### Sink Accessory Pack

- Includes wire basket, lid holder, utensil cylinder with holder, 2 prong hooks and 6 standard hooks
- Grid not included

SWA1



Utilize empty wall space!



SWA1

## Snap-N-Slide® Wall Shelves

- 16 gauge stainless steel
- 1½" upturn on rear and ends
- Brackets can be mounted to studs - no wall backing required
- 1½" roll on front edge of shelf
- Made in the USA

### 430 Stainless Steel Shelves

<b>SWS1224-16/4</b>	12" x 24"
<b>SWS1236-16/4</b>	12" x 36"
<b>SWS1248-16/4</b>	12" x 48"
<b>SWS1260-16/4</b>	12" x 60"
<b>SWS1272-16/4</b>	12" x 72"

### 304 Stainless Steel Shelves

<b>SWS1224-16/3</b>	12" x 24"
<b>SWS1236-16/3</b>	12" x 36"
<b>SWS1248-16/3</b>	12" x 48"
<b>SWS1260-16/3</b>	12" x 60"
<b>SWS1272-16/3</b>	12" x 72"



## QuadTruss® Wire Shelving

- Open-wire design offers high visibility and allows maximum air circulation
- Available in EAGLEbrite® zinc (3 yr. warranty), chrome (1 yr. warranty), Valu-Gard® green epoxy (5 yr. warranty), Valu-Master® gray epoxy (5 yr. warranty) and EAGLEgard® green epoxy (15 yr. warranty)
- EAGLEbrite® shelves feature MasterSeal® coating for improved rust protection
- EAGLEgard® shelves are protected with MICROGARD®, an antimicrobial agent which contains built-in protection to retard the growth of a broad range of bacteria, mold and mildew on the surface of the shelves

EAGLEbrite®	Chrome	Valu-Gard®	Valu-Master®	EAGLEgard®	W x L
1436Z	1436C	1436VG	1436V	1436E	14" x 36"
1448Z	1448C	1448VG	1448V	1448E	14" x 48"
1460Z	1460C	1460VG	1460V	1460E	14" x 60"
1472Z	1472C	1472VG	1472V	1472E	14" x 72"
1824Z	1824C	1824VG	1824V	1824E	18" x 24"
1830Z	1830C	1830VG	1830V	1830E	18" x 30"
1836Z	1836C	1836VG	1836V	1836E	18" x 36"
1842Z	1842C	1842VG	1842V	1842E	18" x 42"
1848Z	1848C	1848VG	1848V	1848E	18" x 48"
1860Z	1860C	1860VG	1860V	1860E	18" x 60"
1872Z	1872C	1872VG	1872V	1872E	18" x 72"
2136Z	2136C	2136VG	2136V	2136E	21" x 36"
2142Z	2142C	2142VG	2142V	2142E	21" x 42"
2160Z	2160C	2160VG	2160V	2160E	21" x 60"
2172Z	2172C	2172VG	2172V	2172E	21" x 72"
2436Z	2436C	2436VG	2436V	2436E	24" x 36"
2448Z	2448C	2448VG	2448V	2448E	24" x 48"
2460Z	2460C	2460VG	2460V	2460E	24" x 60"
2472Z	2472C	2472VG	2472V	2472E	24" x 72"



## Posts

- Numbered posts for easy assembly and adjustable leveling feet
- 14" x 33" posts also available

EAGLEbrite®	Chrome	Valu-gard®	Valu-Master®	EAGLEgard®	Height
P54-Z	P54-C	P54-VG	P54-V	P54-E	54"
P63-Z	P63-C	P63-VG	P63-V	P63-E	63"
P74-Z	P74-C	P74-VG	P74-V	P74-E	74"
P86-Z	P86-C	P86-VG	P86-V	P86-E	86"



## QuadPLUS® Antimicrobial Polymer Shelf Mats

- Removable, green polymer shelf mats with choice of Valu-Gard epoxy-coated standard wire truss frames or Quad-Adjust® truss frames
- Mats lay securely on top of truss frame or standard wire shelf
- Mats feature MICROGARD® antimicrobial protection
- 800 lb weight capacity for shelves up to 48", 600 lb 54" through 72" long - evenly distributed
- Easy assembly - no tools required
- Dishwasher safe
- Both style of truss frames can be fitted onto the same shelf unit
- Temperature rating: -20°F to 125°F

Shelf mats can also be placed over an existing Eagle wire shelf - order just shelf mats

### With Standard Wire Truss Frame

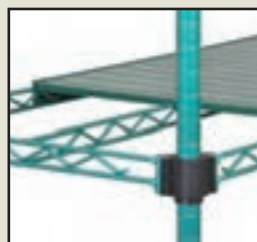
Solid	Louvered	W x L
QPF-1836VG-GS	QPF-1836VG-GL	18" x 36"
QPF-1848VG-GS	QPF-1848VG-GL	18" x 48"
QPF-1854VG-GS	QPF-1854VG-GL	18" x 54"
QPF-1860VG-GS	QPF-1860VG-GL	18" x 60"
QPF-1872VG-GS	QPF-1872VG-GL	18" x 72"
QPF-2436VG-GS	QPF-2436VG-GL	24" x 36"
QPF-2448VG-GS	QPF-2448VG-GL	24" x 48"
QPF-2454VG-GS	QPF-2454VG-GL	24" x 54"
QPF-2460VG-GS	QPF-2460VG-GL	24" x 60"
QPF-2472VG-GS	QPF-2472VG-GL	24" x 72"

### With Quad-Adjust® Truss Frame

Solid	Louvered	W x L
QPF-QA1836VG-GS	QPF-QA1836VG-GL	18" x 36"
QPF-QA1848VG-GS	QPF-QA1848VG-GL	18" x 48"
QPF-QA1854VG-GS	QPF-QA1854VG-GL	18" x 54"
QPF-QA1860VG-GS	QPF-QA1860VG-GL	18" x 60"
QPF-QA1872VG-GS	QPF-QA1872VG-GL	18" x 72"
QPF-QA2436VG-GS	QPF-QA2436VG-GL	24" x 36"
QPF-QA2448VG-GS	QPF-QA2448VG-GL	24" x 48"
QPF-QA2454VG-GS	QPF-QA2454VG-GL	24" x 54"
QPF-QA2460VG-GS	QPF-QA2460VG-GL	24" x 60"
QPF-QA2472VG-GS	QPF-QA2472VG-GL	24" x 72"



QuadPLUS® louvered shelf mat with standard wire truss frame.



QuadPLUS® solid shelf mat with Quad-Adjust® truss frame.



SHELVES AND POSTS SOLD SEPARATELY.

## Quad-Adjust® Adjustable Shelving

- Patented QuadTruss® design
- Add or remove a shelf without disassembling entire shelf unit
- Shelf features corners that interlock with post-mounted collars
- 1" diameter numerically grooved posts
- Leveling feet are provided to help compensate for uneven floor surfaces



### Quad-Adjust® Shelves

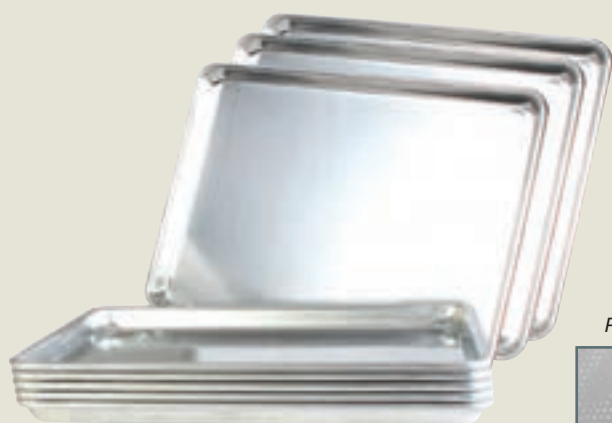
EAGLEbrite® Zinc	Valu-Gard®	EAGLEgard®	W x L
QA1836Z	QA1836VG	QA1836E	18" x 36"
QA1848Z	QA1848VG	QA1848E	18" x 48"
QA1860Z	QA1860VG	QA1860E	18" x 60"
QA1872Z	QA1872VG	QA1872E	18" x 72"
QA2436Z	QA2436VG	QA2436E	24" x 36"
QA2448Z	QA2448VG	QA2448E	24" x 48"
QA2460Z	QA2460VG	QA2460E	24" x 60"
QA2472Z	QA2472VG	QA2472E	24" x 72"

### Posts

EAGLEbrite® Zinc	Valu-Gard®	EAGLEgard®	Height
P7-Z	P7-VG	P7-E	7"
P14-Z	P14-VG	P14-E	14"
P18-Z	P18-VG	P18-E	18"
P33-Z	P33-VG	P33-E	33"
P54-Z	P54-VG	P54-E	54"
P63-Z	P63-VG	P63-E	63"
P74-Z	P74-VG	P74-E	74"
P86-Z	P86-VG	P86-E	86"



Quad-Adjust® Collar



## Aluminum Sheet Pans

<b>ALSP1013</b>	9½" x 13" Quarter Size
<b>ALSP1622</b>	16" x 22", Two-Third Size
<b>ALSP1813†</b>	18" x 13" Half Size
<b>ALSP1826†</b>	18" x 26" Full Size
<b>ALSP1826M</b>	18" x 26" Full Size -18 Gauge
<b>ALSP1826H*</b>	18" x 26" Full Size -16 Gauge
<b>ALSP1826S*</b>	18" x 26" Full Size -12 Gauge

\*With galvanized wire

†Available Perforated (PF), Fully Perforated (PG), and Non-Stick (D)

Perforated



Fully Perforated



Non-Stick



## 18/8 Stainless Steel Sheet Pans

<b>SLSP1813</b>	18" x 13" Half Size
<b>SLSP1826</b>	18" x 26" Full Size



## Stainless Steel Work Tables

- Curved edges for safety and comfort
- 1" adjustable plastic bullet feet
- 18 gauge 430 series stainless steel flat top
- Galvanized legs, socket, under shelf and hat channel
- 35"h



**THUNDER GROUP®**

<b>SLWT42412F</b>	24" x 12"	<b>SLWT43012F</b>	30" x 12"
<b>SLWT42418F</b>	24" x 18"	<b>SLWT43018F</b>	30" x 18"
<b>SLWT42424F</b>	24" x 24"	<b>SLWT43024F</b>	30" x 24"
<b>SLWT42430F</b>	24" x 30"	<b>SLWT43030F</b>	30" x 30"
<b>SLWT42436F</b>	24" x 36"	<b>SLWT43036F</b>	30" x 36"
<b>SLWT42448F*</b>	24" x 48"	<b>SLWT43048F*</b>	30" x 48"
<b>SLWT42460F*</b>	24" x 60"	<b>SLWT43060F*</b>	30" x 60"
<b>SLWT42472F*</b>	24" x 72"	<b>SLWT43072F*</b>	30" x 72"
<b>SLWT42484F*†</b>	24" x 84"	<b>SLWT43084F*†</b>	30" x 84"
<b>SLWT42496F*†</b>	24" x 96"	<b>SLWT43096F*†</b>	30" x 96"

\*Flat top work table with 4" backsplash also available (SLWTxxxxx4).

†84" and 96" models have 6 legs for extra strength and support.



**THUNDER GROUP®**

## Heavy Duty Aluminum Dunnage Racks

- Heavy duty welded aluminum square tubes
- 20" deep



<b>ALDN2036E</b>	36"w x 8"h, 1200 lb Cap.
<b>ALDN2048E</b>	48"w x 8"h, 1500 lb Cap.
<b>ALDN2060E</b>	60"w x 8"h, 1800 lb Cap.
<b>ALDN2036</b>	36"w x 12"h, 1500 lb Cap.
<b>ALDN2048</b>	48"w x 12"h, 1800 lb Cap.
<b>ALDN2060</b>	60"w x 12"h, 2100 lb Cap.



Additional sizes and green epoxy coated shelving available.

## Heavy Duty Commercial Wire Shelving

- Heavy duty wire construction
- Chrome plated shelves and posts
- Under 48" in length, maximum capacity is 850 lb per shelf
- Over 48" in length, maximum capacity is 600 lb per shelf

### Shelves

<b>CMSV1824</b>	18" x 24"	<b>CMSV2172</b>	21" x 72"
<b>CMSV1830</b>	18" x 30"	<b>CMSV2424</b>	24" x 24"
<b>CMSV1836</b>	18" x 36"	<b>CMSV2430</b>	24" x 30"
<b>CMSV1842</b>	18" x 42"	<b>CMSV2436</b>	24" x 36"
<b>CMSV1848</b>	18" x 48"	<b>CMSV2442</b>	24" x 42"
<b>CMSV1854</b>	18" x 54"	<b>CMSV2448</b>	24" x 48"
<b>CMSV1860</b>	18" x 60"	<b>CMSV2454</b>	24" x 54"
<b>CMSV1872</b>	18" x 72"	<b>CMSV2460</b>	24" x 60"
<b>CMSV2124</b>	21" x 24"	<b>CMSV2472</b>	24" x 72"
<b>CMSV2130</b>	21" x 30"	Posts w/Leveling Feet	
<b>CMSV2136</b>	21" x 36"	<b>CMPC008</b>	8" Post
<b>CMSV2142</b>	21" x 42"	<b>CMPC034</b>	33" Post
<b>CMSV2148</b>	21" x 48"	<b>CMPC063</b>	63" Post
<b>CMSV2154</b>	21" x 54"	<b>CMPC072</b>	74" Post
<b>CMSV2160</b>	21" x 60"	<b>CMPC086</b>	86" Post





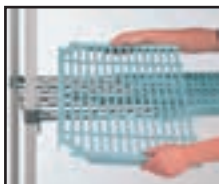


## MetroMax Q™ Shelving

- Polymer shelf mats with Microban® Antimicrobial Protection
- Epoxy coated posts sold separately
- Holds up to 800 lb



Easily adjust shelves with the corner releases.



Shelves include removable polymer mat, wedge connectors, and epoxy coated frame.



### Epoxy Coated Posts

<b>MQ13PE</b>	13"h	<b>MQ63PE</b>	63"h
<b>MQ27PE</b>	27"h	<b>MQ74PE</b>	74"h
<b>MQ33PE</b>	33"h	<b>MQ86PE</b>	86"h
<b>MQ54PE</b>	54"h		



Shelves	W x L
<b>MQ1824G</b>	18" x 24"
<b>MQ1830G</b>	18" x 30"
<b>MQ1836G</b>	18" x 36"
<b>MQ1842G</b>	18" x 42"
<b>MQ1848G</b>	18" x 48"
<b>MQ1854G</b>	18" x 54"
<b>MQ1860G</b>	18" x 60"
<b>MQ1872G</b>	18" x 72"

Shelves	W x L
<b>MQ2124G</b>	21" x 24"
<b>MQ2130G</b>	21" x 30"
<b>MQ2136G</b>	21" x 36"
<b>MQ2142G</b>	21" x 42"
<b>MQ2148G</b>	21" x 48"
<b>MQ2154G</b>	21" x 54"
<b>MQ2160G</b>	21" x 60"
<b>MQ2172G</b>	21" x 72"

Shelves	W x L
<b>MQ2424G</b>	24" x 24"
<b>MQ2430G</b>	24" x 30"
<b>MQ2436G</b>	24" x 36"
<b>MQ2442G</b>	24" x 42"
<b>MQ2448G</b>	24" x 48"
<b>MQ2454G</b>	24" x 54"
<b>MQ2460G</b>	24" x 60"
<b>MQ2472G</b>	24" x 72"



## MetroMax Q® Security Units

- Microban® antimicrobial protection is built into the enclosures, doors, handles and shelves
- Units include taupe epoxy coated top and bottom wire shelves, posts, enclosure and door
- Intermediate shelves are sold separately
- All units are 24" wide



### Stationary Units - 66 1/4" h

Posts have leveling bolts

<b>MQSEC53E</b>	36" long
<b>MQSEC55E</b>	48" long
<b>MQSEC56E</b>	60" long

### Heavy-Duty Mobile Units

67 1/2" h, mounted on dolly with 5" plate casters, wrap around bumper

<b>MQSEC53LE</b>	36" long
<b>MQSEC55LE</b>	48" long
<b>MQSEC56LE</b>	60" long

### MetroMax Q® Intermediate Shelves

Complete with frame, mat and wedge connectors

<b>MQ2436G</b>	36" long
<b>MQ2448G</b>	48" long
<b>MQ2460G</b>	60" long

### Mobile Units - 68 1/2" h

Four 5" swivel casters with 5 1/2" bumpers

<b>MQSEC53DE</b>	36" long
<b>MQSEC55DE</b>	48" long
<b>MQSEC56DE</b>	60" long

### Mobile Units - 68 1/2" h

Four 5" corrosion-proof polymer casters, two with brakes

<b>MQSEC53VE</b>	36" long
<b>MQSEC55VE</b>	48" long
<b>MQSEC56VE</b>	60" long

## STORAGE & TRANSPORT



## MetroMax 4™ Polymer Shelving

- All polymer construction withstands moisture, chemicals and harsh environments
- Shelf mats are removable and dishwasher safe
- With Microban® antimicrobial product protection
- Stationary units can hold 2000 lbs, evenly distributed
- Mobile units can hold 600 lbs, evenly distributed
- Adjustable shelves in 1" increments
- Compatible with MetroMax i® and MetroMax Q® shelves

### Shelves

Includes 4 Wedges

w/Grid Mats	w/Solid Mats	W x L
<b>MX4-2424G</b>	<b>MX4-2424F</b>	24" x 24"
<b>MX4-2430G</b>	<b>MX4-2430F</b>	24" x 30"
<b>MX4-2436G</b>	<b>MX4-2436F</b>	24" x 36"
<b>MX4-2442G</b>	<b>MX4-2442F</b>	24" x 42"
<b>MX4-2448G</b>	<b>MX4-2448F</b>	24" x 48"
<b>MX4-2454G</b>	<b>MX4-2454F</b>	24" x 54"
<b>MX4-2460G</b>	<b>MX4-2460F</b>	24" x 60"



### MetroMax i Bottom Shelves

Required for Mobile Shelving or Stem Caster Carts

w/Grid Mats	w/Solid Mats	W x L
<b>MX2424G</b>	<b>MX2424F</b>	24" x 24"
<b>MX2430G</b>	<b>MX2430F</b>	24" x 30"
<b>MX2436G</b>	<b>MX2436F</b>	24" x 36"
<b>MX2442G</b>	<b>MX2442F</b>	24" x 42"
<b>MX2448G</b>	<b>MX2448F</b>	24" x 48"
<b>MX2454G</b>	<b>MX2454F</b>	24" x 54"
<b>MX2460G</b>	<b>MX2460F</b>	24" x 60"

### Posts

Stationary	Mobile	
<b>MX13P</b>	—	13"
<b>MX27P</b>	<b>MX27UP</b>	27"
<b>MX33P</b>	<b>MX33UP</b>	33"
<b>MX54P</b>	<b>MX54UP</b>	54"
<b>MX63P</b>	<b>MX63UP</b>	63"
<b>MX74P</b>	<b>MX74UP</b>	74"
<b>MX86P</b>	<b>MX86UP</b>	86"

## Utility Cart

- Polypropylene construction
- Ships knocked down
- Grey (G) or Black (K)

### UC-35

3 Tier, 33¼" x 17" x 37½"



## Wire Shelving

- Heavy-duty wire construction
- Easy to assemble, no tools required
- Capacity: under 48" in length, up to 850 lbs per shelf; over 48" in length, up to 600 lbs per shelf
- Shelf depth 14" - 24"; Shelf length 24" - 72"
- 4 sleeve clips included per shelf
- Chrome and epoxy posts - from 8" to 86" high
- Shelves must be purchased in multiples of 2
- Posts must be purchased in multiples of 4



Chrome Plated Shelving  
for use in dry storage and  
heated environments.



Epoxy Coated  
Shelving for use in  
all environments,  
including humid areas.

## Casters

- For Epoxy coated and Chrome plated Wire Shelving

VC-CT 5" dia  
VC-CTB 5" dia w/ brake



## Aluminum Sheet Pan Racks

- Heavy duty construction
- ALRK-10 and ALRK-20 ship knocked down
- AWRK-20 features Winco's exclusive Weld<sup>2</sup> Dual Weldment System

ALRK-10\* 10 Tier Rack, K.D.

ALRK-20\* 20 Tier Rack, K.D.

AWRK-20 20 Tier Rack, Welded

\*Available with brakes, add (BK) suffix



ALRK-10



AWRK-20



## Metal Lockers

- Rugged metal design with welded frame
- Use freestanding or attached to other lockers
- Deep enough for coat hangers
- Vented doors
- Features adjustable legs for easy leveling on almost any surface
- 78"l x 12"w
- Color: Beige

### LKR-2BG

2-Tier, 18" deep, K.D.

### LKR-2BGA

2-Tier, 18" deep, Assembled

### LKR-5BG

5-Tier, 15" deep, K.D.

### LKR-5BGA

5-Tier, 15" deep, Assembled

### LKR-6BG

6-Tier, 15" deep, K.D.

### LKR-6BGA

6-Tier, 15" deep, Assembled







OUR-1811-5



## Panco® Economy Aluminum Pan Racks

- High strength extruded aluminum sections
- Rack slides fit most popular tray sizes and configured to accommodate a variety of products
- 21" w x 26½" d
- 5" casters

		Sliding Space	Tray Capacity (18" x 26")
OUR-1811-5	64¼"h	5"	11
OUR-1818-3	64¼"h	3"	18
OUR-1820-3	69¼"h	3"	20
OUR-1824-2	69¼"h	2¼"	24



## Panco® All Welded Pan Racks

- High strength extruded aluminum sections
- Rack slides are designed to fit most popular tray sizes and configured to accommodate a variety of products
- 5" casters
- 69"h

	Sliding Space	Tray Capacity (18" x 26")
Front Load - 20½" w x 26" d		
OUR-1820-3/W	3"	20
OUR-1830-2/W	2"	30
Side Load - 28½" w x 19" d		
OUR-2620-3/W	3"	20
OUR-2630-2/W	2"	30

## STORAGE & TRANSPORT



## Panco® Aluminum Bun Pans

- Feature rust-resistant wire bead for durability

### Standard Pans - 18 Gauge

Half Size - 17¼" x 12⅞"

SP1813-18	Solid
PP1813-18	Perforated

Full Size - 17¾" x 25⅝"

SP1826-18	Solid
PP1826-18	Perforated
SP1826-G	Glazed

### Pans - 16 Gauge

Full Size - 17¾" x 28⅞"

SP1826-16	Solid
Full Size - 17¾" x 25¼", NSF	
SP1826-N	Solid
SP1826-NCA	Anodized, Solid

## Panco® Transport Cabinets®

- Aluminum exterior and interior
- Doors are standard single, non-insulated
- Bottom mounted heating system removable for cleaning or servicing
- Adjustable thermostatic temperature control with digital temperature indicator
- Full 270° open swing door with magnetic door latch
- Heavy duty 5" swivel casters - two with brake (extended undercounter cabinets feature 3" casters)
- Full perimeter bumper
- 120V



HSPC-B



Heated Full Size, 76½"h	Proofing	Heating/Proofing	Cabinet Width	Door Type	Wire Slides Spaced
FSHC-A	FSPC-A	FSHPC-A	Narrow - 31⅞"	Solid	2¼"
FSHC-B	FSPC-B	FSHPC-B	Narrow - 31⅞"	Tuffak®	2¼"
Half Size, 39⅞"h					
HS HC-A	HSPC-A	HS HPC-A	Narrow - 31⅞"	Solid	2¼"
HS HC-B	HSPC-B	HS HPC-B	Narrow - 31⅞"	Tuffak®	2¼"
Extended Undercounter, 30½"h					
EUHC-A	EUPC-A	EUHPC-A	Extended - 32½"	Solid	3"
EUHC-B	EUPC-B	EUHPC-B	Extended - 32½"	Tuffak®	3"



FSHC-A

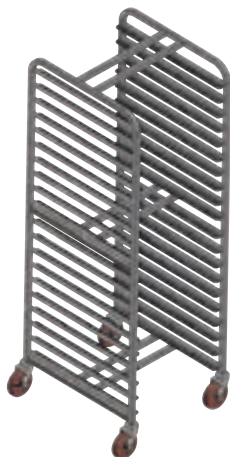


### Can Dispensing Rack

- Heavy duty welded aluminum construction - will not rust or corrode
- First in first out
- Self-feeding feature
- Shipped setup
- Holds 162 #10 cans or 216 #5 cans

#### CR-162

25¼" w x 35" l x 71" h



### Nesting Pan Rack

- Heavy duty aluminum frame with welded angle slides, 3" spacing between runners
- 5" polyurethane swivel stem casters
- Capacity of 20 - 19½" x 19½" trays or 20 - 19⅞" x 19⅞" trays

#### AL-19520B-H

22¼" w x 26" l x 69¼" h

### Economy Tubular Dunnage Racks

- Prolongs product life by circulating air underneath
- 12" height above floor meets all sanitary health codes
- All welded 1½" x 1½" heavy duty, rustproof aluminum tube construction



**DASQ-4-1220**

20" w x 48" l x 12" h

**DASQ-4-1224**

24" w x 48" l x 12" h

WL-66



WL-16/CB



### Multi-Tier Lockers

- Ideal for all types of facilities - retail, industrial, supermarket, foodservice, schools and government agencies
- Opens with door pulls and will accept padlock or flat key (both not included)
- Doors are mesh grid vented • Standard color is beige

**WL-66\*** 1 Column, 6 Doors Total, 12" w x 12" d x 78" h

**WL-618\*** 3 Columns, 18 Doors Total, 36" w x 12" d x 78" h

**WL-16/CB** 2 Columns w/6 Doors ea & Joined at Top w/4 Door  
Compartment Wall Mount Locker, 72" w x 18" d x 78" h OA

\*Shipped assembled

### Pan Racks

- Pan racks can proof, store & transport 18" x 26" pans and trays - K/D unit is easy to assemble
- All welded, 1" aluminum tubing with heavy duty, welded, angle pan supports
- Rolls easily on four 5" swivel casters
- Lifetime guarantee against rust and corrosion
- Holds 20 - 18" x 26" pans
- 21" w x 26" l

**ADE-1820B/KDA** 69" h, Economy,  
Ships Knocked Down

**AL-1820B** 69¼" h, All Welded

ADE-1820B/KDA



### Heater/Proofer Cabinets

NHPL-1825-UNC

- Non-insulated - heavy duty aluminum construction
- Forced air design provides even heat distribution
- Easy dual proof/heat control
- "Proof/humidity" mode: up to 95% humidity at 110°F (43°C)
- "Heat" mode: maximum temperatures up to 180°F (82°C)
- 5" polyurethane plate casters standard with two brakes



#### NHPL-1836C

Standard, Holds 35 - 18" x 26" Pans, 1440W,  
21" w x 30¾" d x 66½" h

#### NHPL-1836-ECOC

Economy, Holds 35 - 18" x 26" Pans, 1440W,  
21" w x 30¾" d x 66½" h

#### NHPL-1810/HHC

Undercounter, Holds 10 - 18" x 26" Pans,  
1440W, 21" w x 30¾" d x 30¾" h

#### NHPL-1825-UNC

Universal Runner, 25 Pan Slides, 1440W,  
24" w x 32" d x 70" h



### Enclosed Mobile Cabinet

- All welded, reinforced, non-insulated aluminum
- Double pan construction with reinforced braces
- Sanitary and rust-proof
- 5" polyurethane, swivel plate, double ball race casters, locking casters are available
- 21" w x 27" l x 68" h

#### EC-1840-C

Holds 40 - 18" x 26" Trays





## Elite Series™ Enclosed Room Service Cart

- Stainless steel construction
- Houses 14" x 18" or 15" x 20" with 6" ledge spacing
- 6 tray capacity
- Long life door latch
- Corner bumpers
- Compartment floor drain for drying
- No-Mark® heavy duty 6" cushion tread casters, 2 fixed, 2 swivel with brakes

**5500** 33" x 21¾" x 45¾"



NSF

## Hydration/Nutrition Cart

- Stainless steel cabinet and storage compartment
- Laminate finish and top
- Top mounted removable full size drop-in chilled pan
- Two cup dispensers
- One drawer with full size drop-in chilled pan and one utility drawer
- 5" casters

**690-10** 44½" x 26" x 37¾"h



**L LAKESIDE®**

## Express Heat™ Series

- All welded stainless steel construction
- Double wall construction with forced air
- Single thermostatic control
- E927, Adjust-a-fit® dispenser has a 25" stacking height capacity and a diameter adjustment range of 3¼"
- Includes stainless steel heat retaining covers
- 4" swivel casters, 2 with brake

**E6209** 20¾" x 36½" x 39⅞"  
Accommodates Plate Size: 8¼" to 9⅞"

**E927** 20¾" x 36½" x 39⅞", Adjust-a-fit®,  
Accommodates Plate Size: 6½" to 9¾"



UL

NSF



UL

NSF

## Dual Temp Transport Cart

- Stainless steel interior and exterior
- Maintains food safe temperatures without power for up to 30 minutes
- Fully self-contained refrigeration system is easy to service
- Mechanical thermostats with light powered digital temperature read-outs function when unit is unplugged
- Single on/off switch controls both hot and cold compartments
- 6" swivel casters, 2 with brake

**6760** 53¾" x 33¼" x 59"h

## Self Leveling Mobile Cabinets

- All-welded stainless steel cabinets
- Easy adjustment for plate dispensing height, no tools required
- Houses 8¼" to 9⅞" plates
- Corner bumpers
- Each heated dispenser features its own thermostatic control
- Stainless steel Easy-Glide™ design provides quiet, non-stick operation
- Lake-Glide® Casters: 4" – all swivel, 2 each with brake, extra-load
- 18½" x 32" x 39⅞"h

**5209** 2 Non-Heated Dispensers  
**6209** 2 Heated Dispensers



UL

NSF

**L LAKESIDE®**

## Self-Leveling Heated Pellet Dispenser

- Stainless steel construction
- Heated compartment has automatic hi-temp shut off
- Insulated cabinet with forced air heat
- Houses pellets from 7" to 10¼"
- Self-leveling dispenser units are removable
- 5" Lake-Glide® swivel casters, 2 with brakes
- Push handle for easy mobility



**7501** 2 Dispensers, 33⅞" x 23¾" x 42¾"  
**7502** 3 Dispensers, 43⅞" x 23¾" x 42¾"

UL

NSF

## Elite Series™ Low Profile Tray Truck

- All-welded stainless steel construction
- Cart body and removable stainless steel ledge panels
- Houses 14" x 18" or 15" x 20" trays, two per ledge
- Paddle latch door catch assures positive door closure and convenient one-hand opening
- Sturdy welded push handle
- Base corner bumpers
- Compartment floor drains
- Lake-Glide® Casters: 6" - 2 fixed, 2 swivel

NSF

**5624** 55¾" x 34" x 42"h 24 Tray Cap.  
**5628** 55¾" x 34" x 47¾"h 28 Tray Cap.  
**5632** 55¾" x 34" x 52½"h 32 Tray Cap.





Features a contemporary look, high performance, and unequal safety.

Additional Colors Also Available

## Shoreline Meal Delivery System

- 9½" high-density plastic, thermal warming pellet
- Can be heated in a lowerator
- Holds heat at its core to keep hot foods at safe temperatures for over 1 hour
- Stays 20°F cooler on the edge than metal pellets to protect staff and patients from burns
- Won't chip or dent like metal
- Stacks quietly to not disturb patients
- Use with Camtrays®



Safely lift hot, thermal pellets or plates with the Pellet Lifter.

**MDSM8**

Mug, 8 oz

**MDSB5**

Small Bowl, 5 oz

**MDSB9**

Large Bowl, 9 oz

**MDSD9**

Insulated Dome, Fits 9" Plate

**MDSL9**

Pellet Underliner, 9½" dia

**MDSP9**

Thermal Pellet, 9½" dia

**MDSPL**

Pellet Lifter, 3"h

**CLSSM8B5148**

Small Sip Lid, Fits Small Bowl or Mug

**CLSM8B5190**

Small Disposable Lid, Fits Small Bowl or Mug

**CLSB9190**

Large Disposable Lid, Fits Large Bowl



**CAMBRO**  
TRUSTED FOR GENERATIONS™



## CamLid™ Disposable Lids

- Translucent, disposable lids fit tightly on Newport, Laguna® and Colorware Tumblers
- For tumblers commonly used in healthcare meal delivery, CamLids™ prevent spills throughout delivery and patient use

## Meal Delivery Carts

- 2 doors, 2 compartments
- Single stack rail system handles two trays per rail, eight trays per compartment
- Molded-in handles make the cart easy to maneuver
- Door opens a full 270°, marine rail top keeps trays secure during the prep
- Self-draining shelf and bottom make cleaning easy
- Requires 39" wide doorway size
- Colors: Slate Blue (401), Granite Gray (191), Granite Green (192), Granite Sand (194)



### Low Profile, Double Doors

**MDC1418S20** Holds (20) 14 x 18" Trays, 48½" x 32½" x 44"h

**MDC1520S20** Holds (20) 15 x 20" Trays, 55½" x 38" x 43¼"h

### Tall Profile, Single Door

**MDC1418T16** Holds (16) 14 x 18" Trays, 28" x 36½" x 58½"h

**MDC1520T16** Holds (16) 15 x 20" Trays, 30½" x 39½" x 58½"h

### Tall Profile, Three Doors

**MDC1418T30** Holds (30) 14 x 18" Trays, 60" x 29¼" x 63½"h

**MDC1520T30** Holds (30) 15 x 20" Trays, 60" x 29¼" x 63½"h

### Tall Profile, Three Doors w/Security Package

**MDC1411T60** Holds (60) 14 x 11" Trays, 60" x 29¼" x 63½"h

Durable carts designed specifically for meal delivery needs of health care providers.

**CAMBRO**  
TRUSTED FOR GENERATIONS™





## C5™ 1 Series Non-Insulated Heated Holding & Proofing Cabinet

- Extruded aluminum powder coated frame with .090" polycarbonate window door
- 3" spaced, fixed wire slides
- Features a digital thermometer, recessed control dials, master on/off switch, Power "On" light, water pan, ball bearing blower forced air system
- 5" casters, two with brake

### C519-CFC-4

25½"w x 30¼"d x 69¾"h



## STORAGE & TRANSPORT

## C5™ 3 Series Insulation Armour™ Heated Holding & Proofing Cabinet

- Fully insulated dutch doors with polycarbonate window
- Universal slides are adjustable on 1½" increments with SiteSelect™
- 5" donut neoprene wheels, 2 with brakes

### C539-CDC-U

27⅝"w x 31½"d x 71"h



## C5™ 4 Series Insulation Armour™ Plus Heated Holding Cabinet

- Stainless steel cabinet with foamed-in-place polyurethane polymer panels
- Stainless steel door is field reversible, 180° swing
- Universal wire slides are adjustable in 1½" increments
- Thermostatically controlled heating element
- 5" donut neoprene casters

### C549-ASFS-U

30"w x 33"d x 69½"h

**METRO**



## Heavy Duty Mobile Refrigerators

- Polyurethane insulation with stainless steel structure
- Polymer Armour panels help protect the cabinet
- All-in-one, bottom mounted refrigerated cassette with R134a refrigerant, temperature range of 33°F to 40°F
- Electronic temperature control with automatic defrost
- 30"w x 39¼"d x 72"h

**C5R9-SB** Adjustable Bottom Load

**C5R9-SL** Adjustable Lip Load

**C5R9-SF** Fixed Lip Load



Heavy-duty holding solutions  
for the most demanding mobile  
& stationary applications.

## C5™ T-Series Heated Holding Cabinet with Transport Armour™

- Heavy-duty stainless steel construction
- Keeps food hot for 5 hours or longer
- Foamed-in-place polyurethane insulation
- Steel reinforced polymer handles double as bumpers
- Digital controls
- Adjustable slides on 1.675" spacing
- Interchangeable slide systems
- 6" casters

### C5T9-DSF

Fixed Lip Load,  
30"w x 39¼"d x 73⅝"h

